

Vuforia Engine Academic

Vuforia Engine Academic is an innovative offering that provides educators and students with access to an augmented reality (AR) software development kit (SDK) for classroom use, allowing students and educators to quickly and easily develop and deploy AR applications.

WHY VUFORIA ENGINE ACADEMIC?

Creative Empowerment

The robust AR technology of Vuforia Engine Academic empowers students to build unique AR experiences for new or existing applications.

Best-In-Class Computer Vision

Computer vision enables applications to see like we do, which lets them understand how digital objects should interact with the environment.

Most Flexibility

Vuforia Engine Academic offers the flexibility needed for AR applications to interact with a variety of use cases in the physical world.

Broadest Reach

Vuforia Engine is optimized for most iOS, Android, and Universal Windows Platform devices on the market.

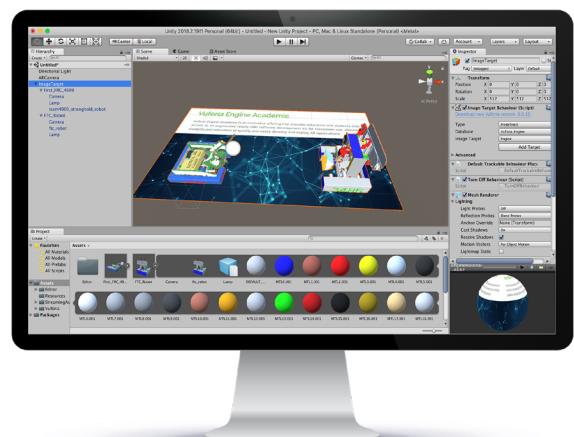
LEARN MORE AT:

www.vuforia.com/engine

Augmented Reality Made Easy

Vuforia Engine Academic is a powerful SDK that allows students to create AR applications for deployment on a range of phones, tablets, AR headsets and smart glasses. This offering provides students and professors with best-in-class computer vision technology, and revolutionizes classroom learning.

Vuforia Engine is the world's most widely deployed AR SDK, having powered more than 60,000 apps with over 625 million installs worldwide, Vuforia Engine Academic brings the same cutting-edge technology to the classroom enabling student developers to create engaging and creative AR applications.



Augmented Reality Target Methods



VuMarks

VuMarks are customizable QR codes that provide a universal solution for delivering AR on any object where the VuMark is present.



Image Targets

Image Targets are images, such as magazine pages, trading cards and photographs, that Vuforia Engine can detect and track.



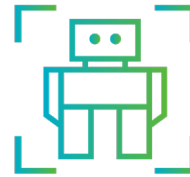
Multi Targets

Multi Targets are created for objects with flat surfaces and multiple sides, or that contain multiple images.



Cylinder Targets

Cylinder Targets allow users to place AR content on objects with cylindrical or conical shapes, such as bottles, cans, cups, etc.



Object Targets

Object Targets are physical objects, such as toys, models, and other consumer products, that Vuforia Engine can detect and track.

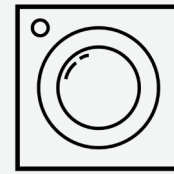
Place Digital Content in the Environment



Ground Plane

Allows users to attach content to horizontal surfaces such as floors and tables.

Change Your Augmented Reality Perspective



External Camera

Lets you access video frames outside of phones and tablets for AR experiences.

What's Included?

- Up to 500 device initializations*
- Access to deploy up to 500 apps*
- Advanced API access
- Silver Support

*Must purchase Vuforia Engine Campus Pack. A lab pack including 50 device initializations is also available.



© 2019, PTC Inc. (PTC). All rights reserved. Information described herein is furnished for informational use only, is subject to change without notice, and should not be taken as a guarantee, commitment, or offer by PTC. PTC, the PTC logo, and all PTC product names and logos are trademarks or registered trademarks of PTC and/or its subsidiaries in the United States and other countries. All other product or company names are property of their respective owners. The timing of any product release, including any features or functionality, is subject to change at PTC's discretion.